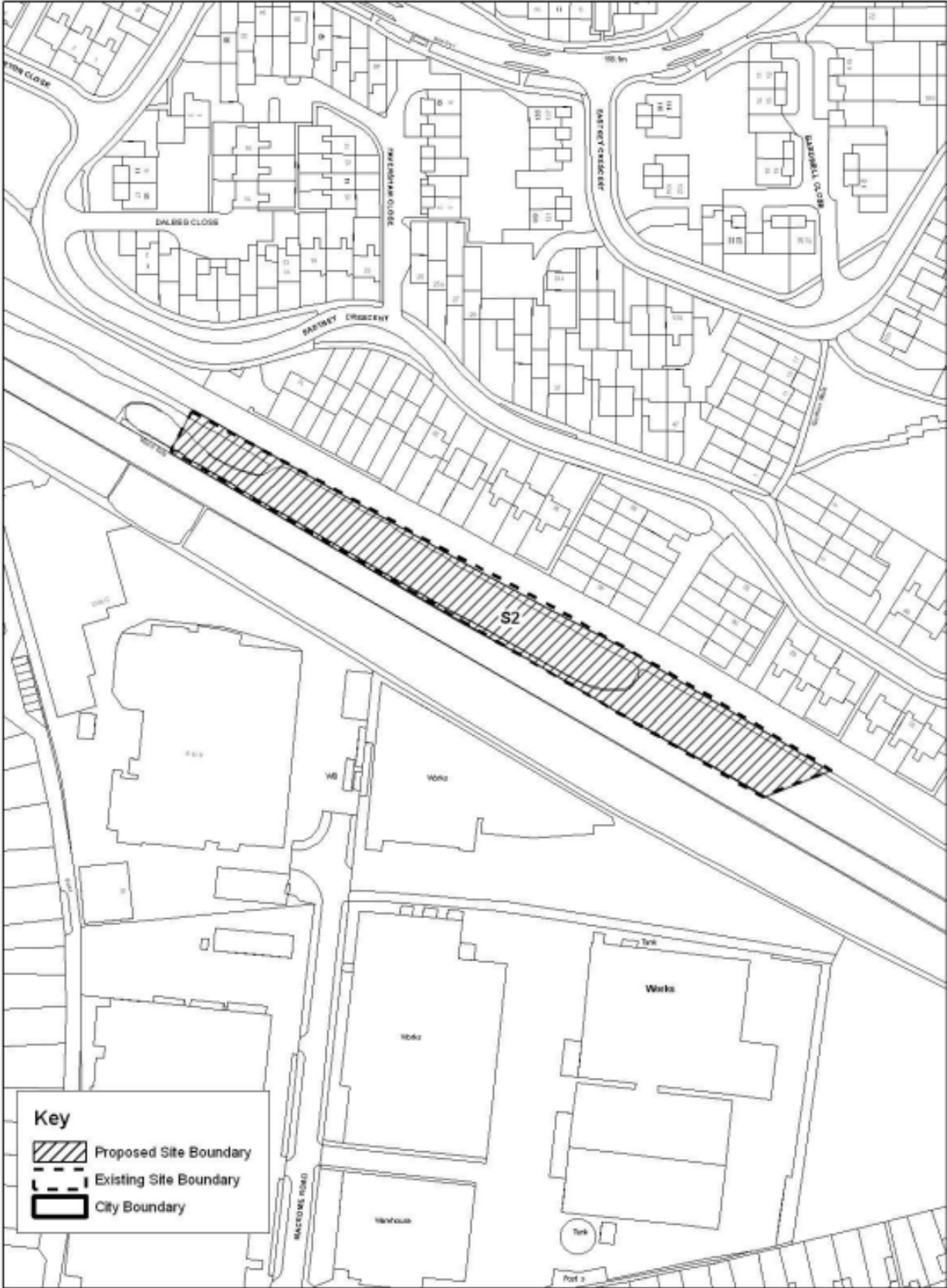



Appendix 1 SINC and SLINC Designation Plans

- Plan 1 Barnhurst Bridge Cutting Geological SLINC
- Plan 2 Beacon Hill Cemetery Geological SINC
- Plan 3 Bridgnorth Road Hedge SLINC
- Plan 4 Bushbury Hill Geological SINC
- Plan 5 Colton Hills School Pond SLINC
- Plan 6 Dudley to Priestfield Railway, North SLINC
- Plan 7 Dunstall Hill Trading Estate Geological SINC
- Plan 8 Dunstall Hill Wood SLINC
- Plan 9 The Gorge, Cinder Hill Geological SINC
- Plan 10 Grassy Lane (removal of SLINC)
- Plan 11 Highfields Park SLINC
- Plan 12 The Holdings at Oxley North SINC
- Plan 13 Moseley Hall SINC
- Plan 14 Farmland West of Moseley Hall SLINC
- Plan 15 Neachells Lane Open Space SLINC
- Plan 16 Land at Northwood Park SLINC
- Plan 17 Land at Northwood Park Road - removal of SLINC
- Plan 18 Northycote Farm SINC
- Plan 19 Oxley Park Golf Course SLINC
- Plan 20 Park Hill Geological SINC
- Plan 21 Land at Penn Road SLINC
- Plan 22 Rocket Pool SLINC
- Plan 23 Sedgley Park SINC / SLINC
- Plan 24 Smestow Valley SINC – Wightwick Mill Field
- Plan 25 Smestow Valley SINC – Wolverhampton Environment Centre
- Plan 26 Land East of Stafford Road SLINC
- Plan 27 Land West of Stafford Road SLINC
- Plan 28 Woodlands Walk SLINC

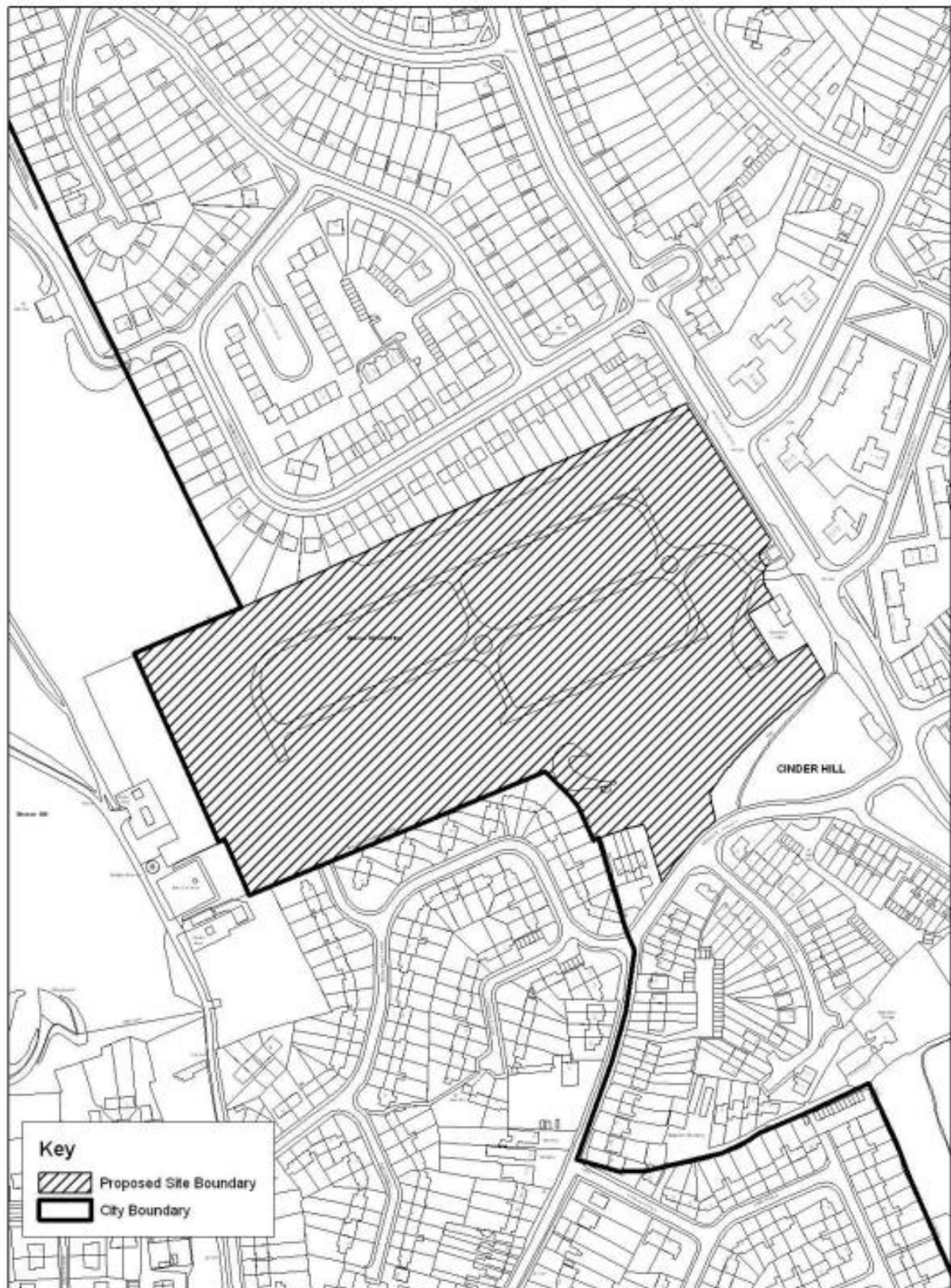
Plan 1 Barnhurst Bridge Cutting Geological SLINC (dashed line boundary)



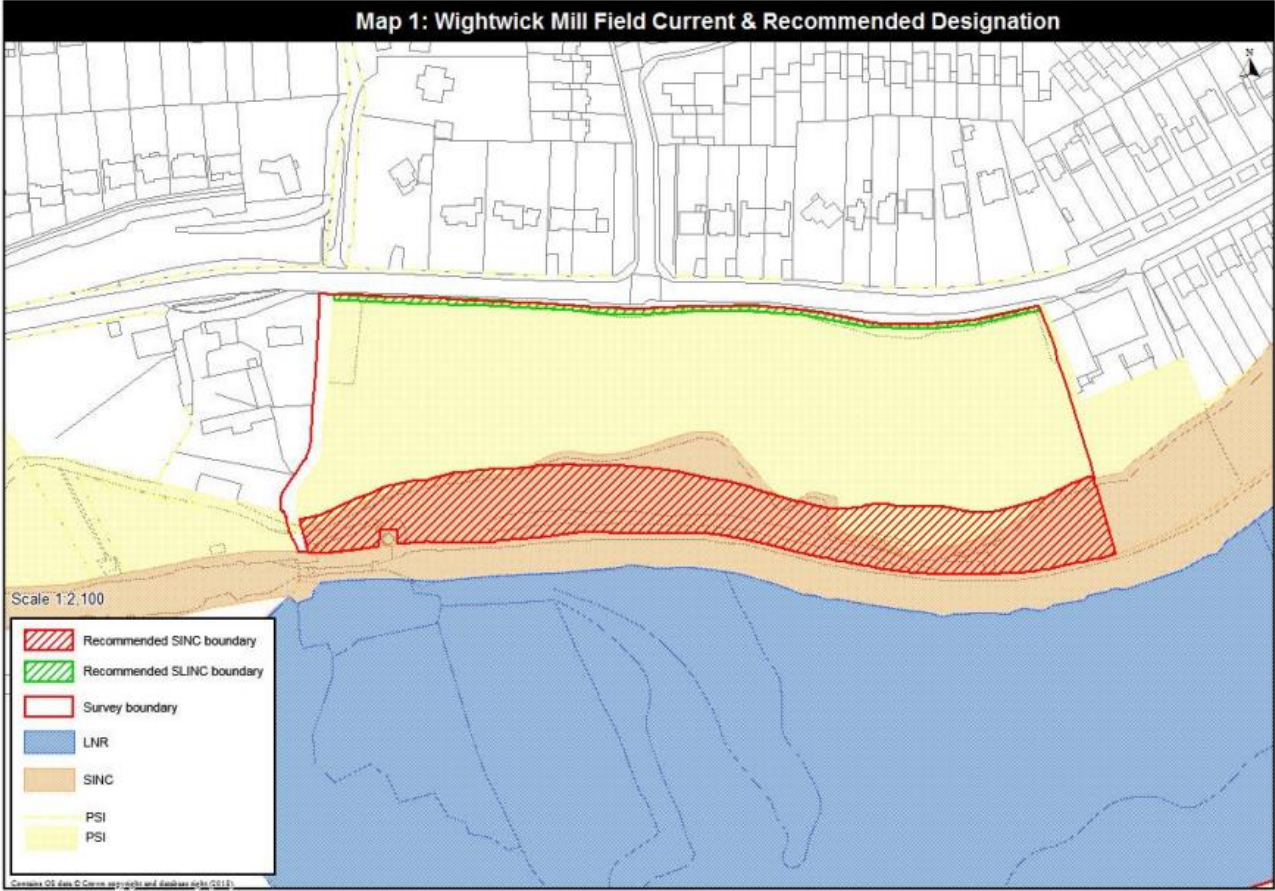
Key

-  Proposed Site Boundary
-  Existing Site Boundary
-  City Boundary

Plan 2 Beacon Hill Cemetery Geological SINC (black line boundary)



Plan 3 Bridgnorth Road Hedge SLINC (green line boundary)

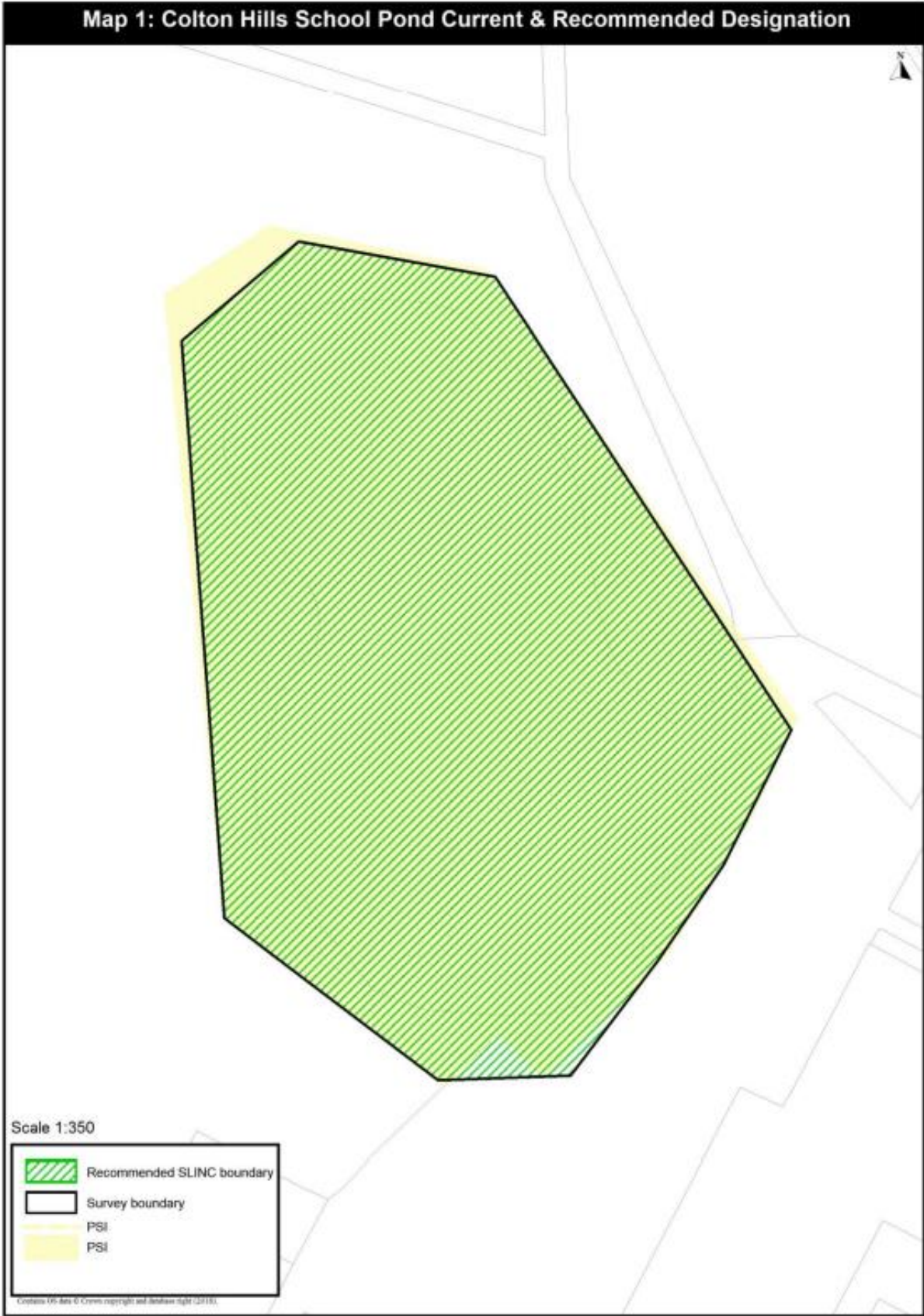


Plan 4 Bushbury Hill Geological SINC (black line boundary)

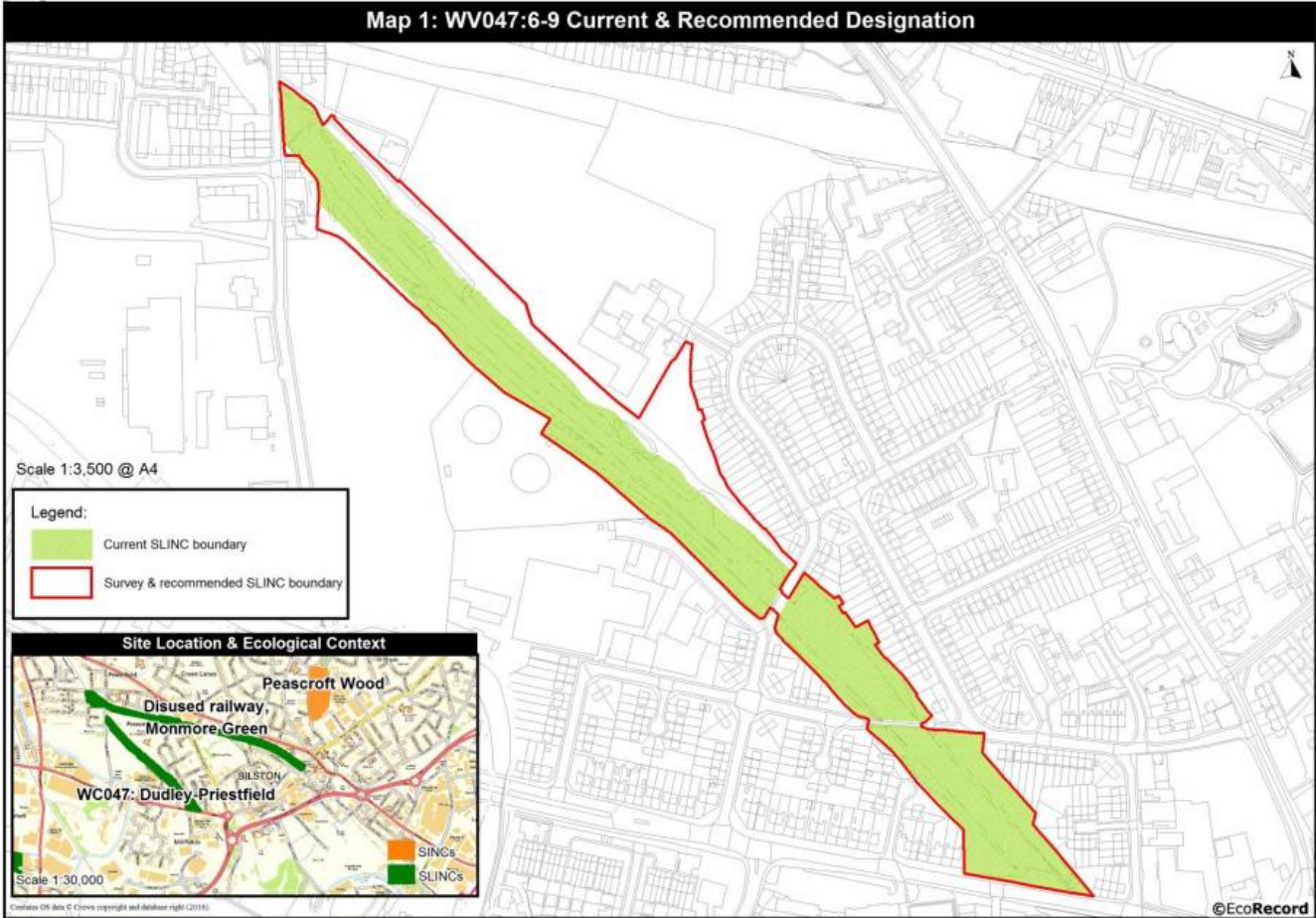


Reproduced with the permission of Geographer's A-Z for the internal business use of Wolverhampton CC. Licence CD218
This map is reproduced from Ordnance Survey material with the permission of Ordnance Survey on behalf of Her Majesty's Stationery Office © Crown copyright 14,800
Unauthorised reproduction infringes Crown copyright and may lead to prosecution or civil proceedings. 100019537 2011

Plan 5 Colton Hills School Pond SLINC (black line boundary)



Plan 6 Dudley to Priestfield Railway, North SLINC (red line boundary)

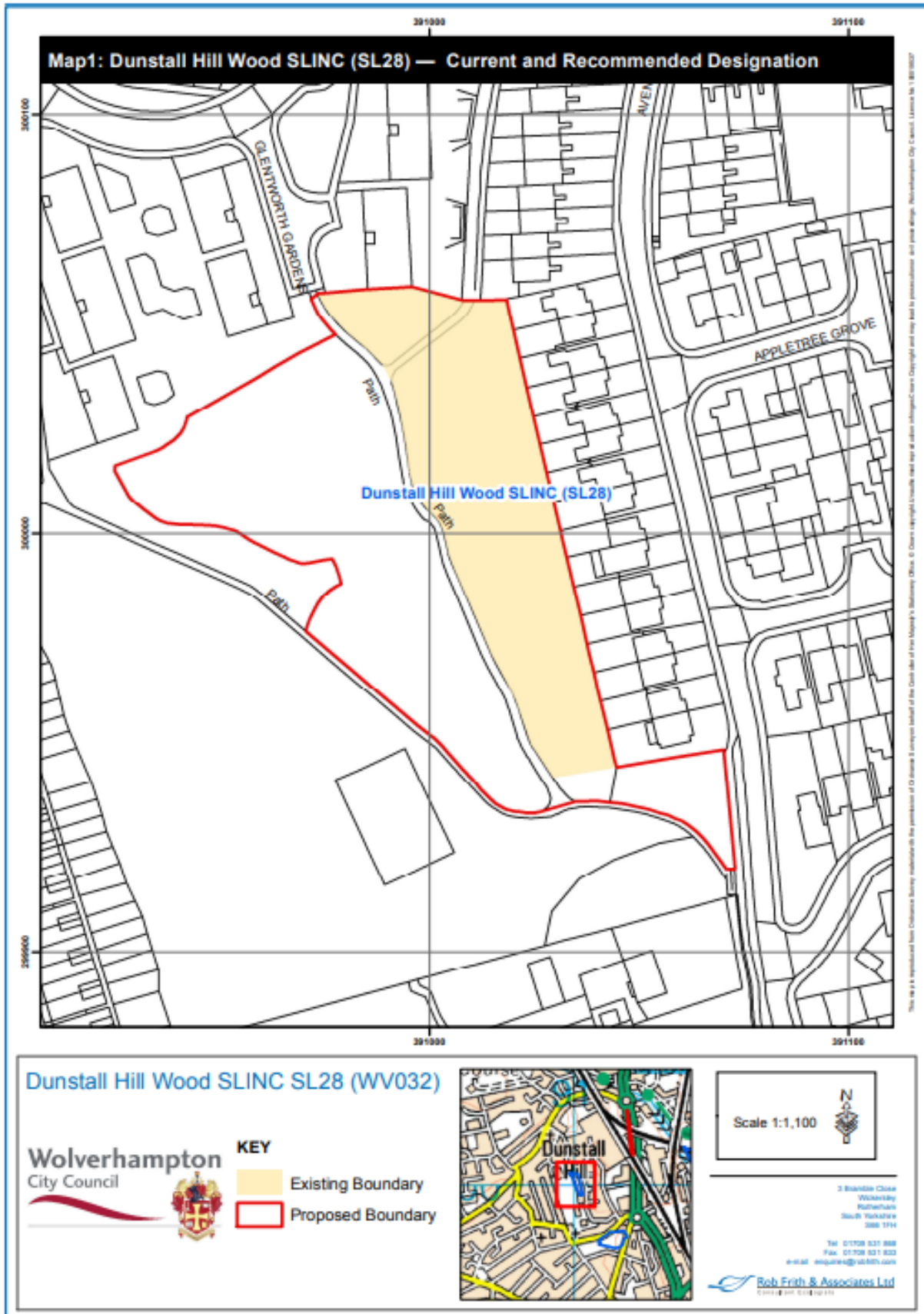


Plan 7 Dunstall Hill Trading Estate Geological SINC (black line boundary)

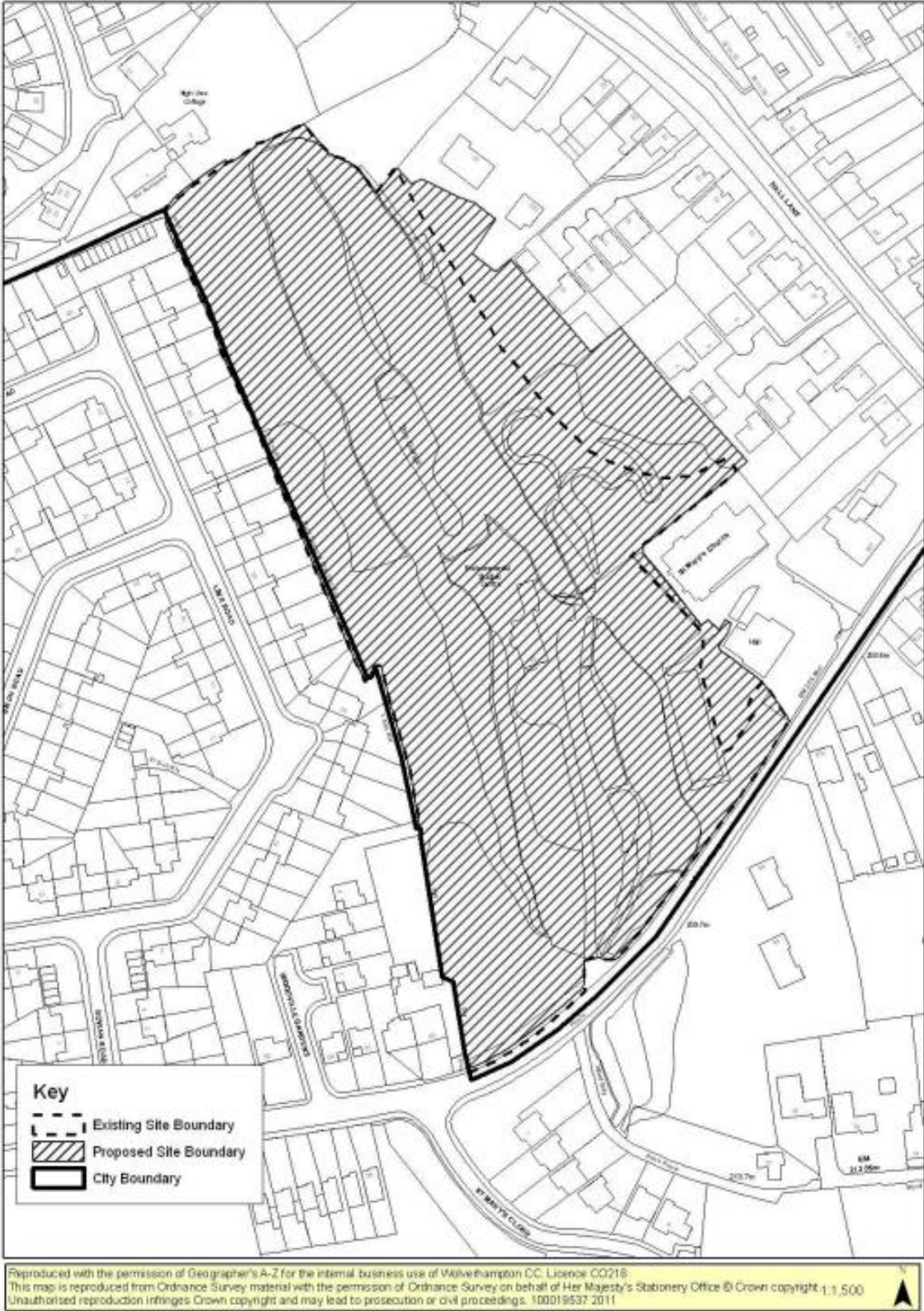


Reproduced with the permission of Geographer's A-Z for the internal business use of Wolverhampton CC. Licence CC218
This map is reproduced from Ordnance Survey material with the permission of Ordnance Survey on behalf of Her Majesty's Stationery Office © Crown copyright 1:1,500
Unauthorised reproduction infringes Crown copyright and may lead to prosecution or civil proceedings. 100019637 2011

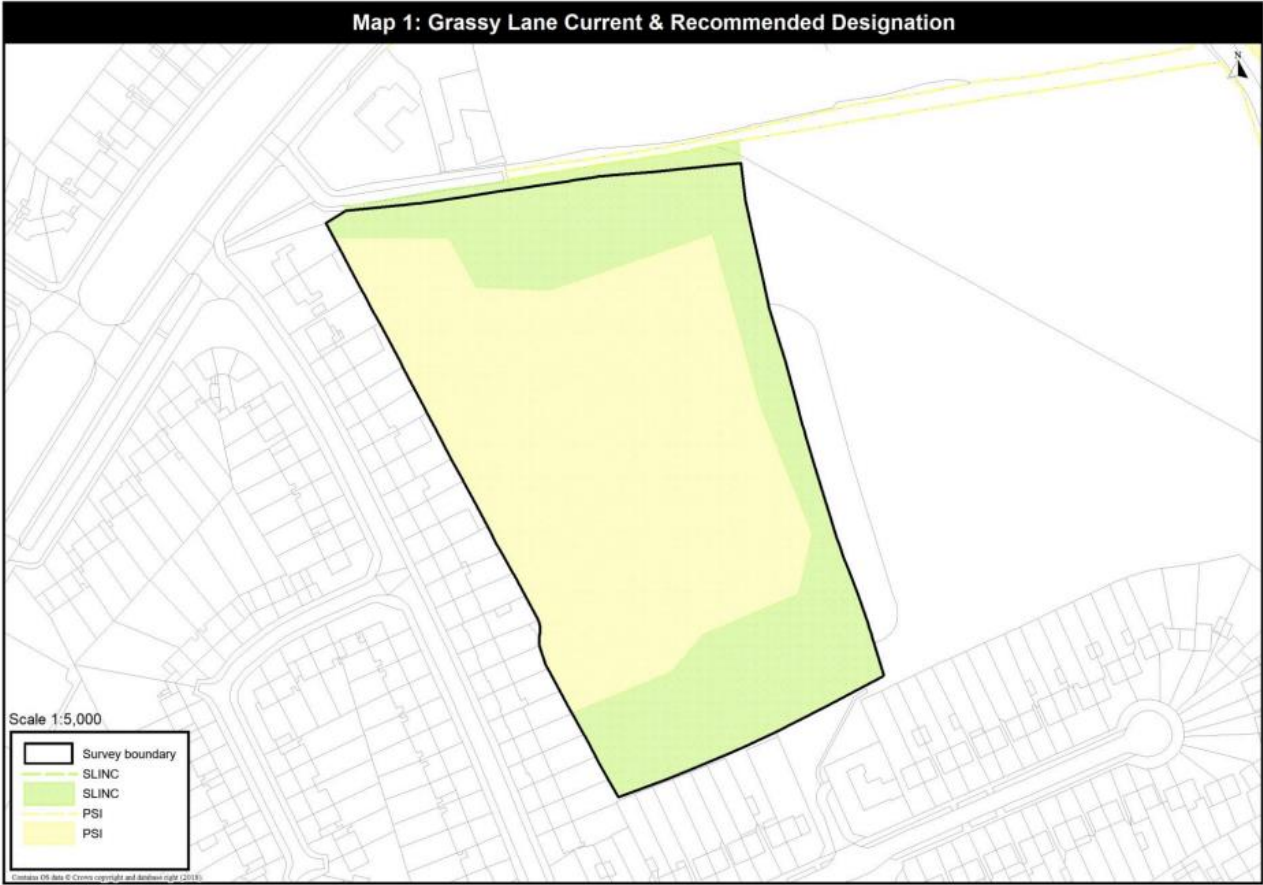
Plan 8 Dunstall Hill Wood SLINC (red line boundary)



Plan 9 The Gorge, Cinder Hill Geological SINC (black line boundary)



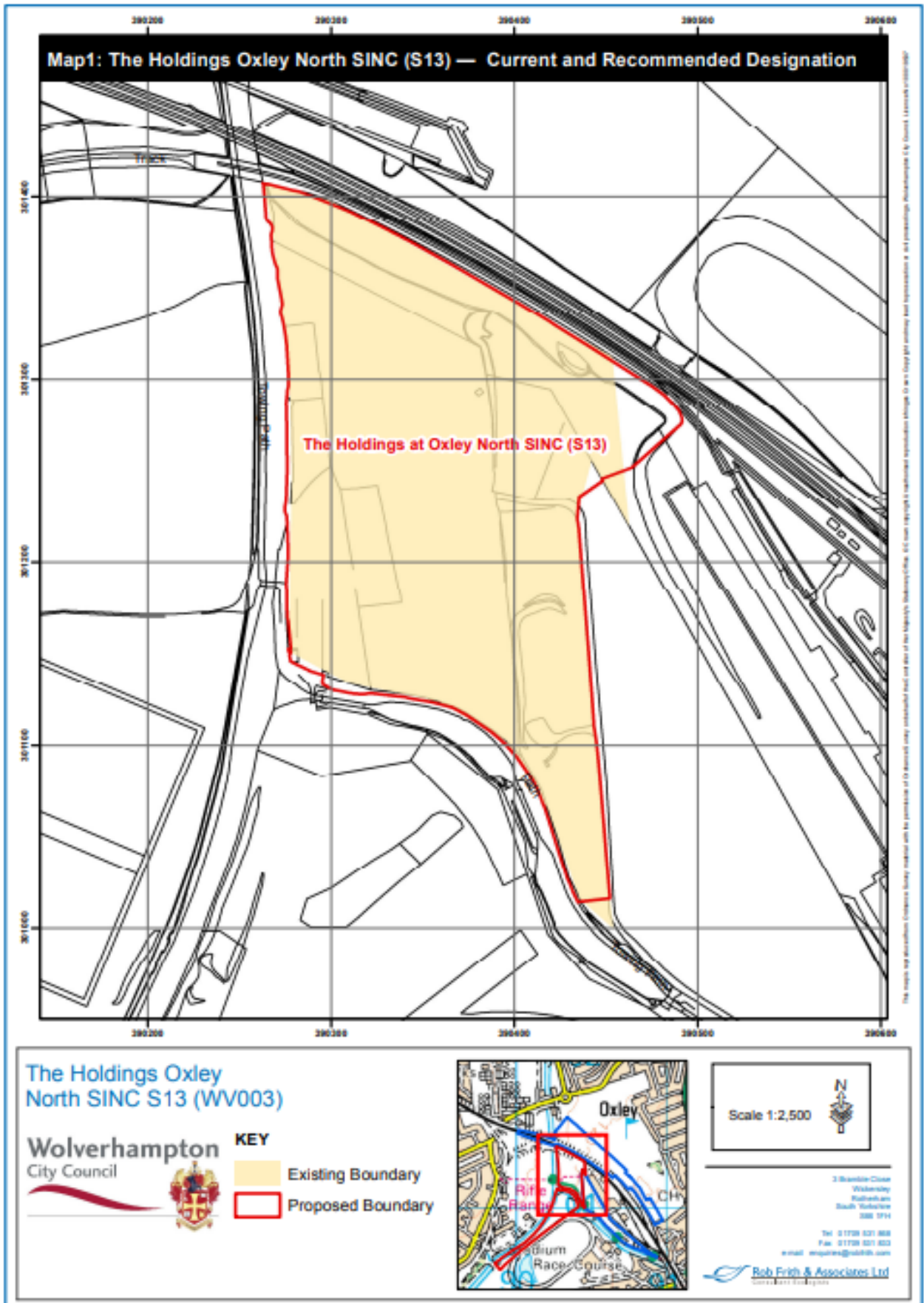
Plan 10 Grassy Lane - removal of SLINC (green area)



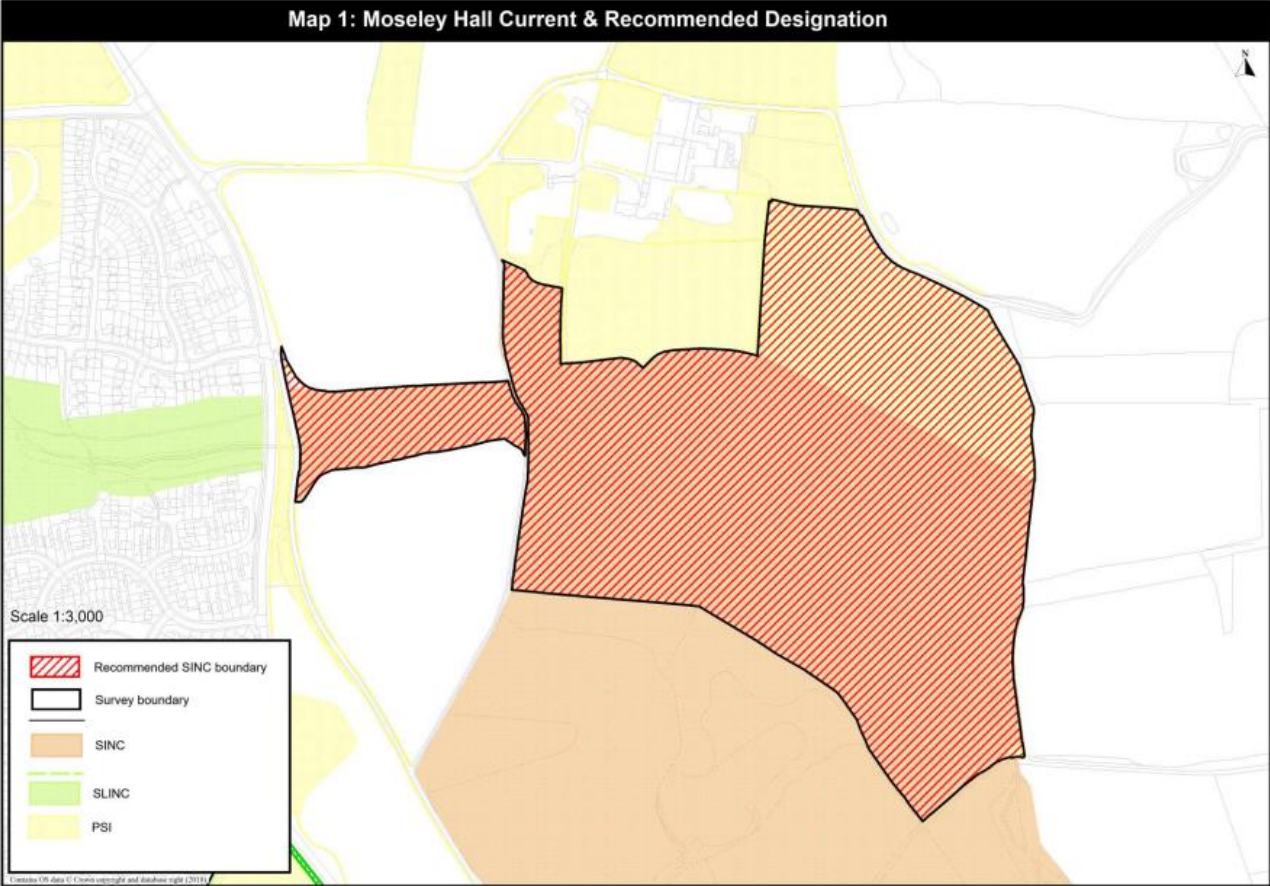
Plan 11 Highfields Park SLINC (green line boundary)



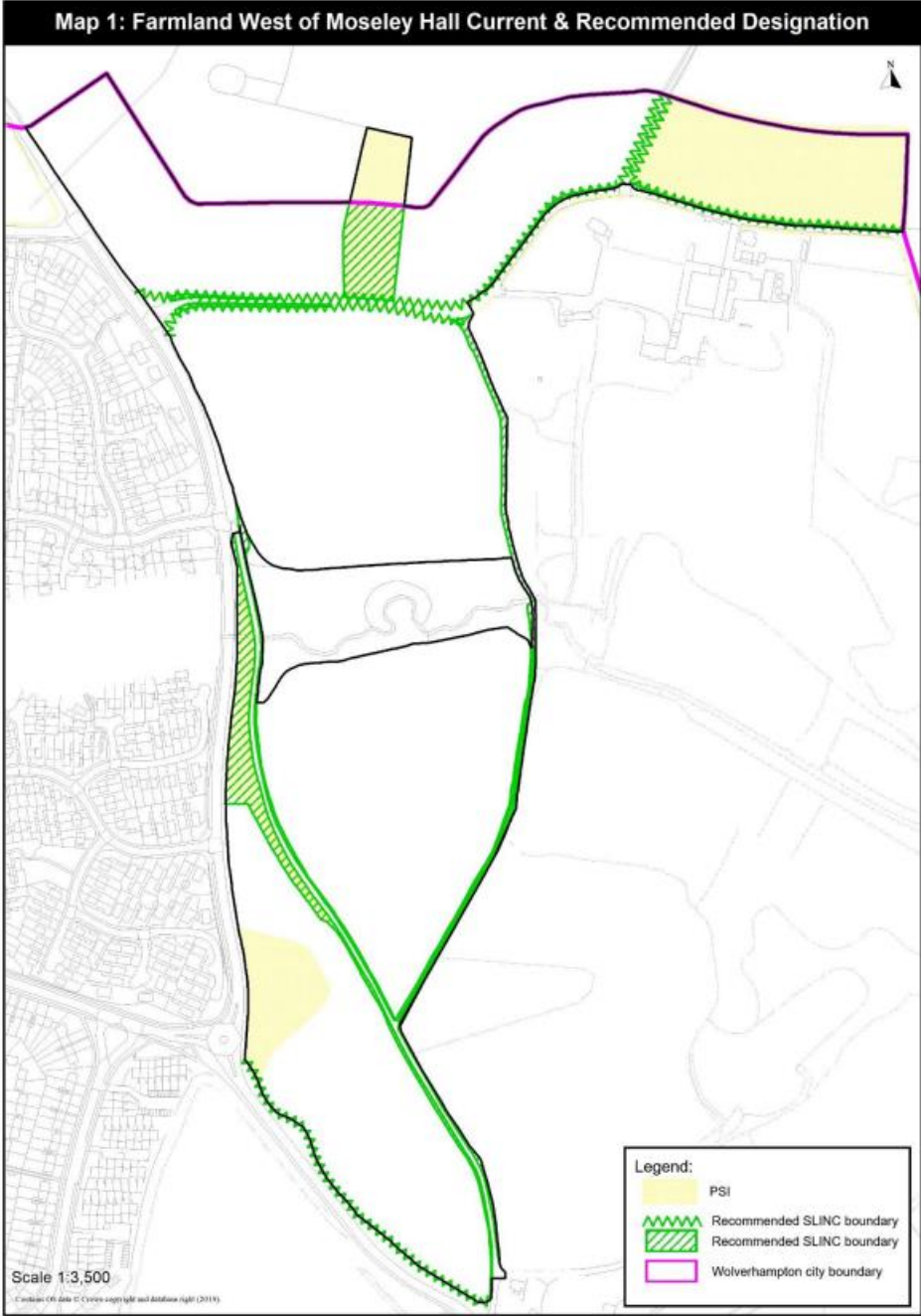
Plan 12 The Holdings at Oxley North SINC (red line boundary)



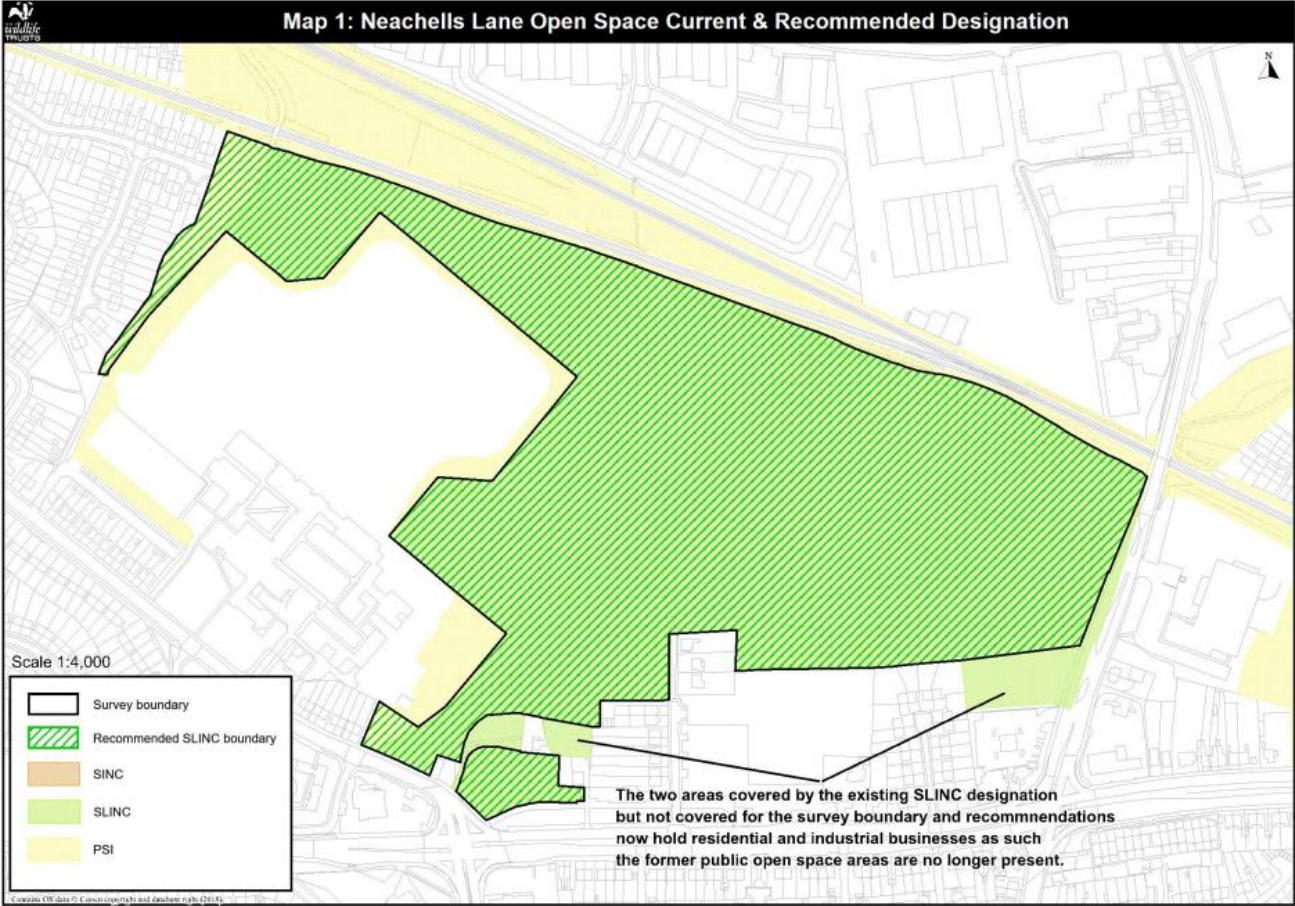
Plan 13 Moseley Hall SINC (black line boundary)



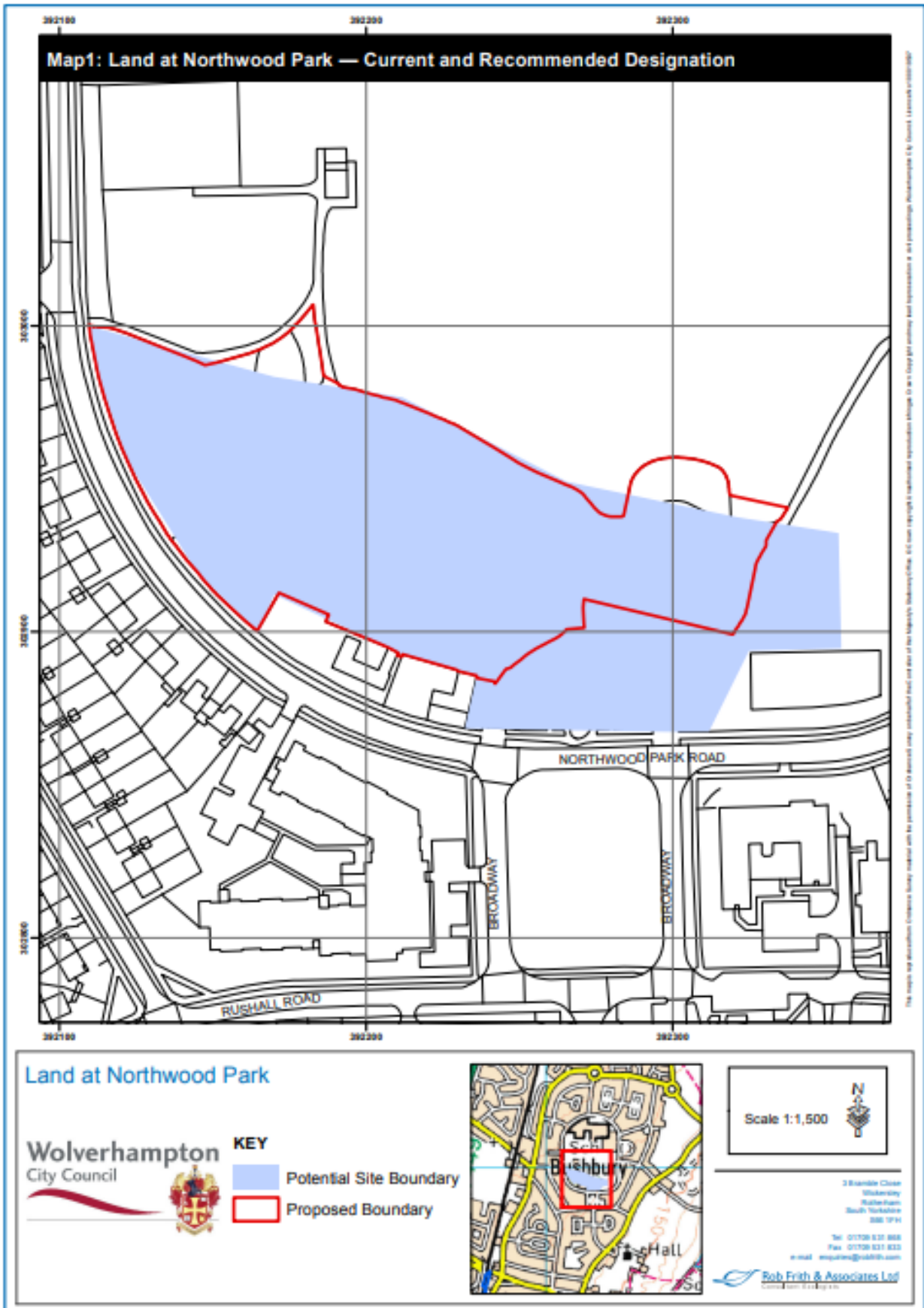
Plan 14 Farmland West of Moseley Hall SLINC (green line boundary / zigzag lines)



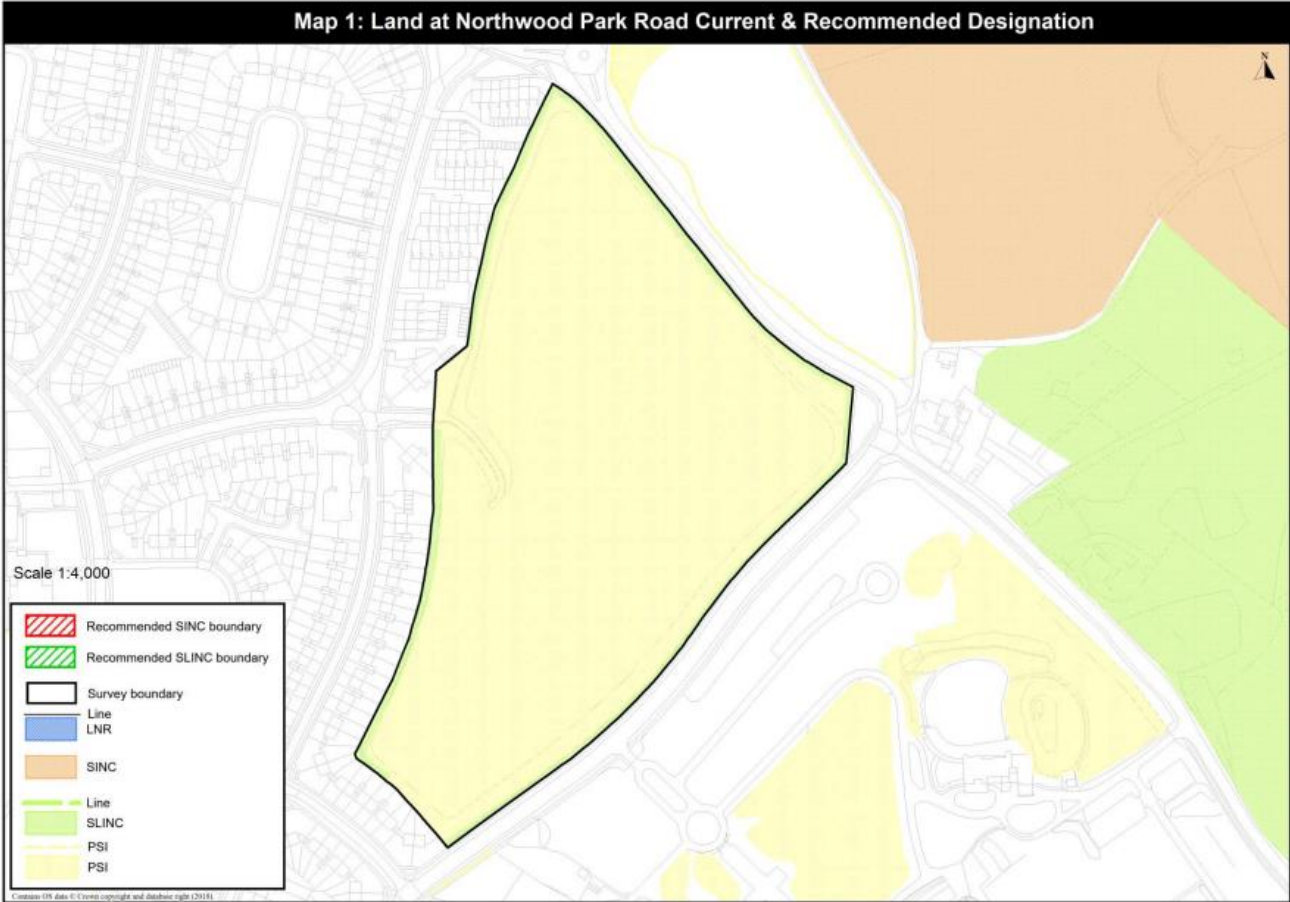
Plan 15 Neachells Lane Open Space SLINC (black line boundary)



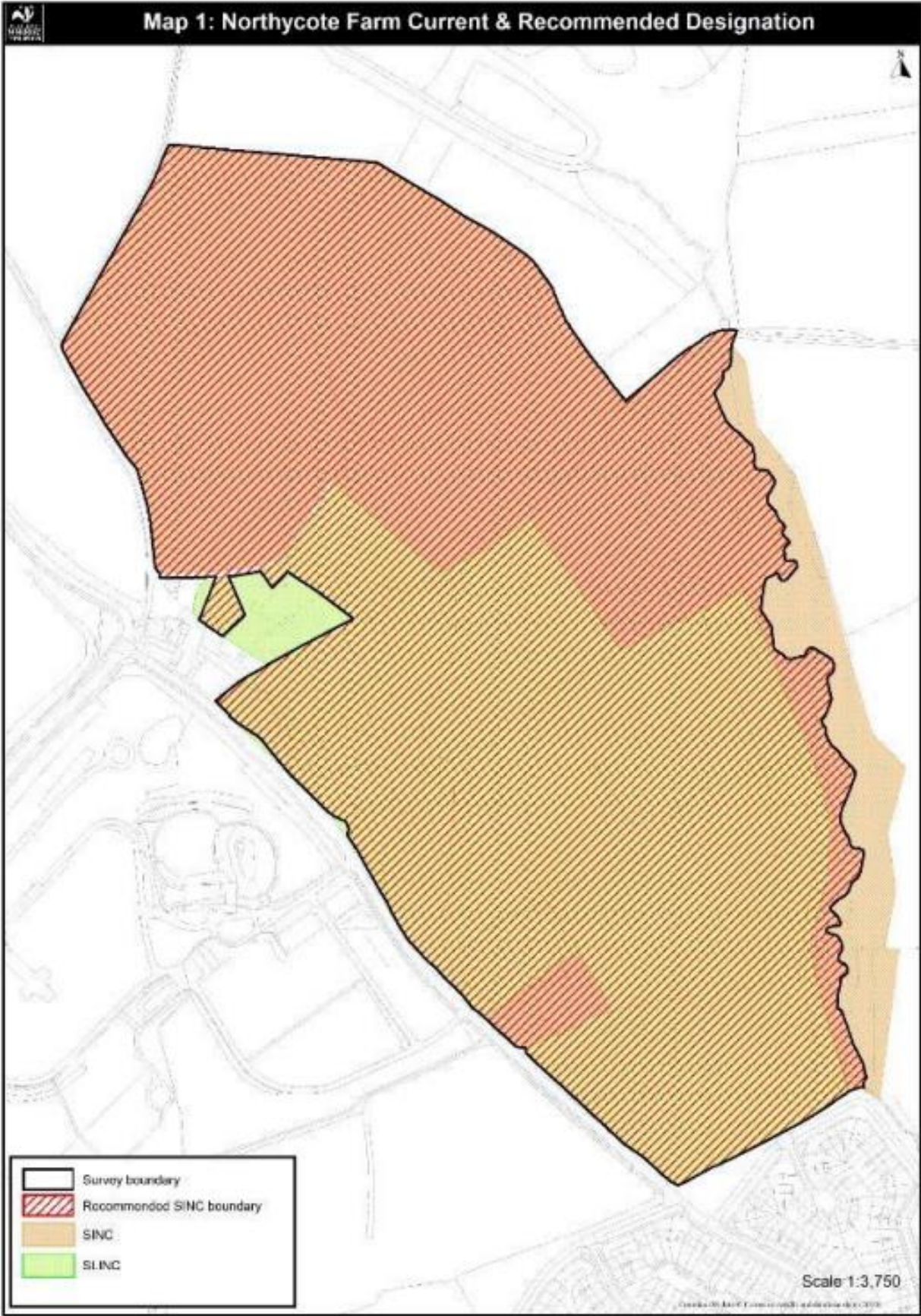
Plan 16 Land at Northwood Park (red line boundary)



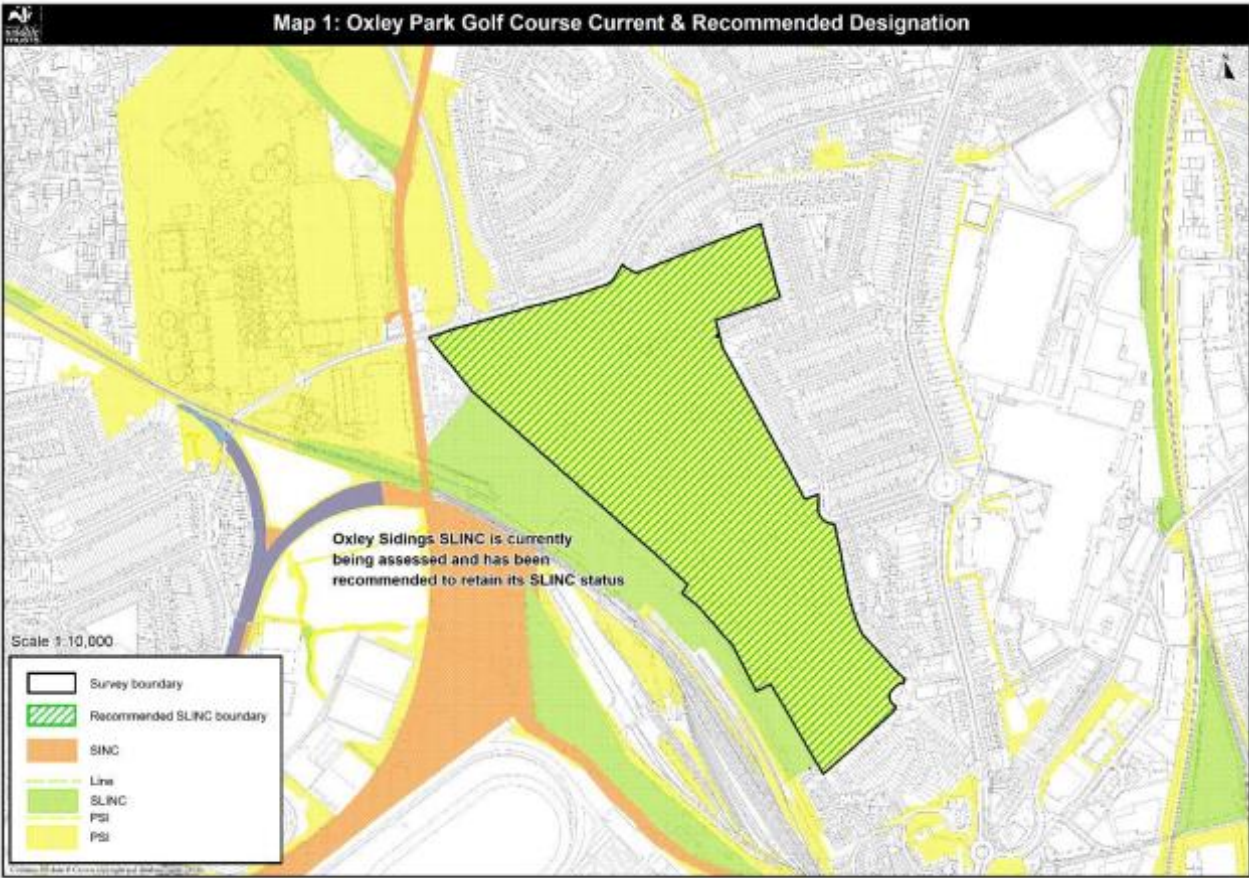
Plan 17 Land at Northwood Park Road - removal of SLINC (green area/strips within black line boundary)



Plan 18 Northcote Farm SINC (black line boundary)



Plan 19 Oxley Park Golf Course SLINC (black line boundary)

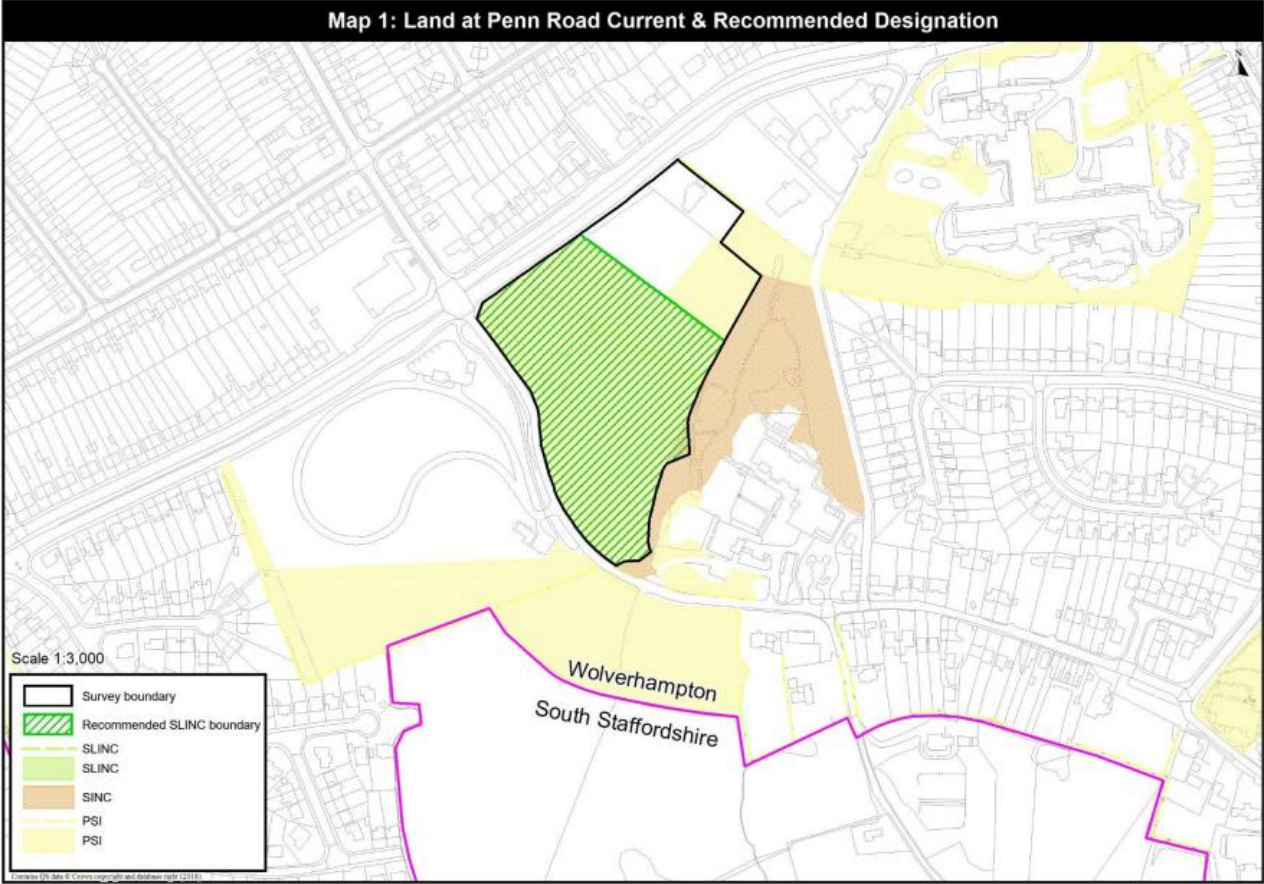


Plan 20 Park Hill Geological SINC (dashed line boundary)

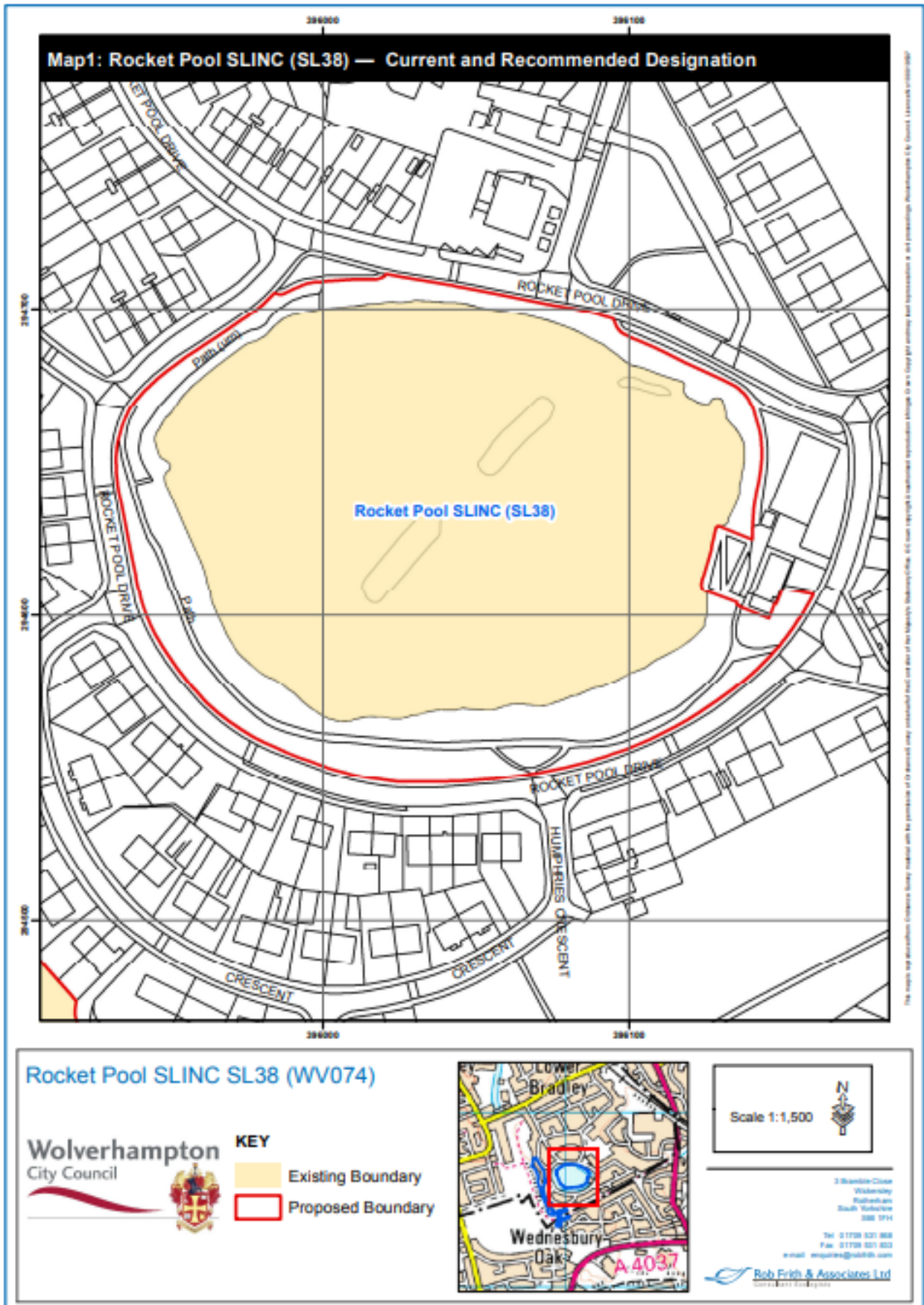


Reproduced with the permission of Geographer's A-Z for the internal business use of Wolverhampton CC. Licence CO218.
This map is reproduced from Ordnance Survey material with the permission of Ordnance Survey on behalf of Her Majesty's Stationery Office © Crown copyright 1:1,853.
Unauthorised reproduction infringes Crown copyright and may lead to prosecution or civil proceedings. 100018537 2011

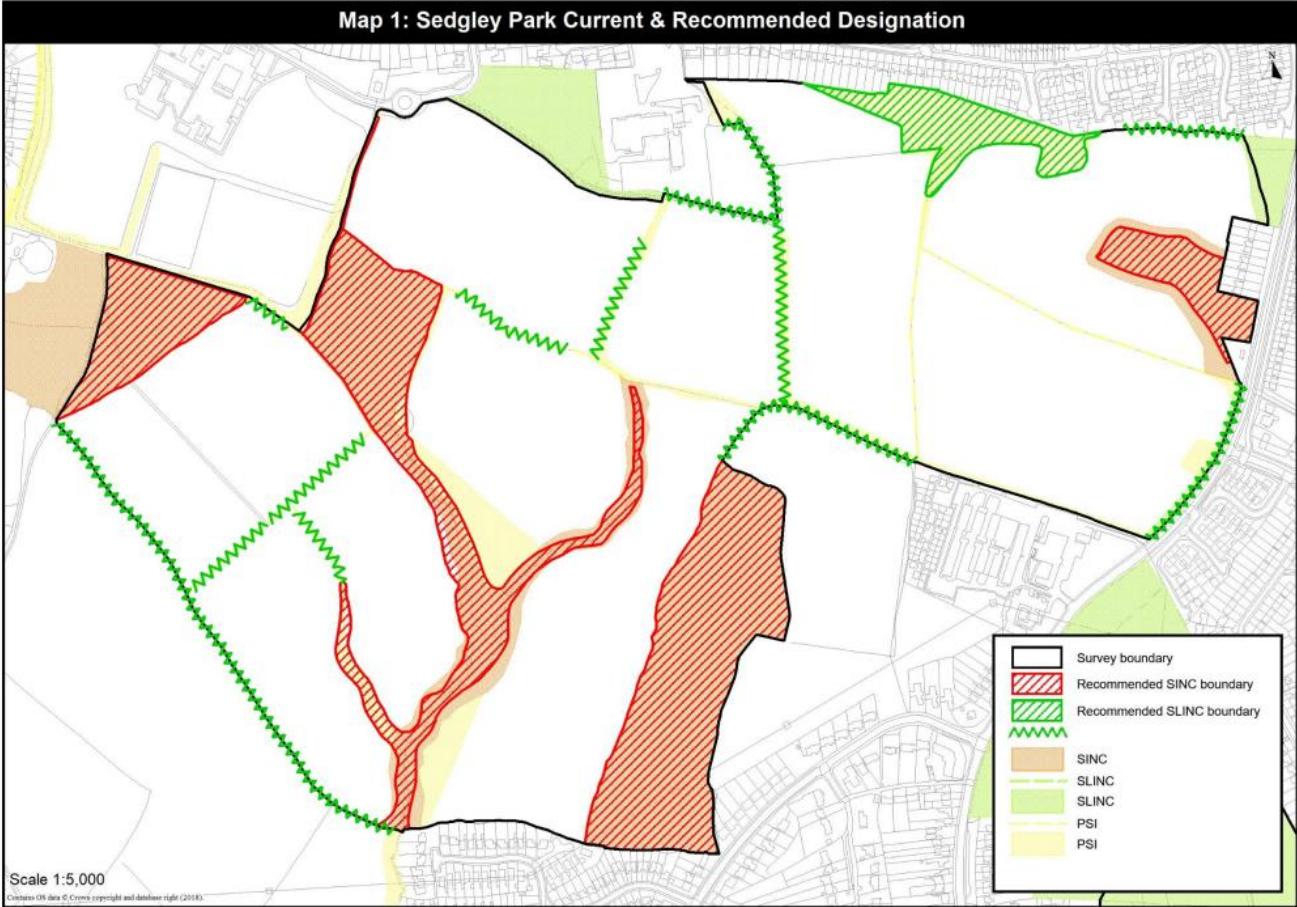
Plan 21 Land at Penn Road SLINC (green line boundary)



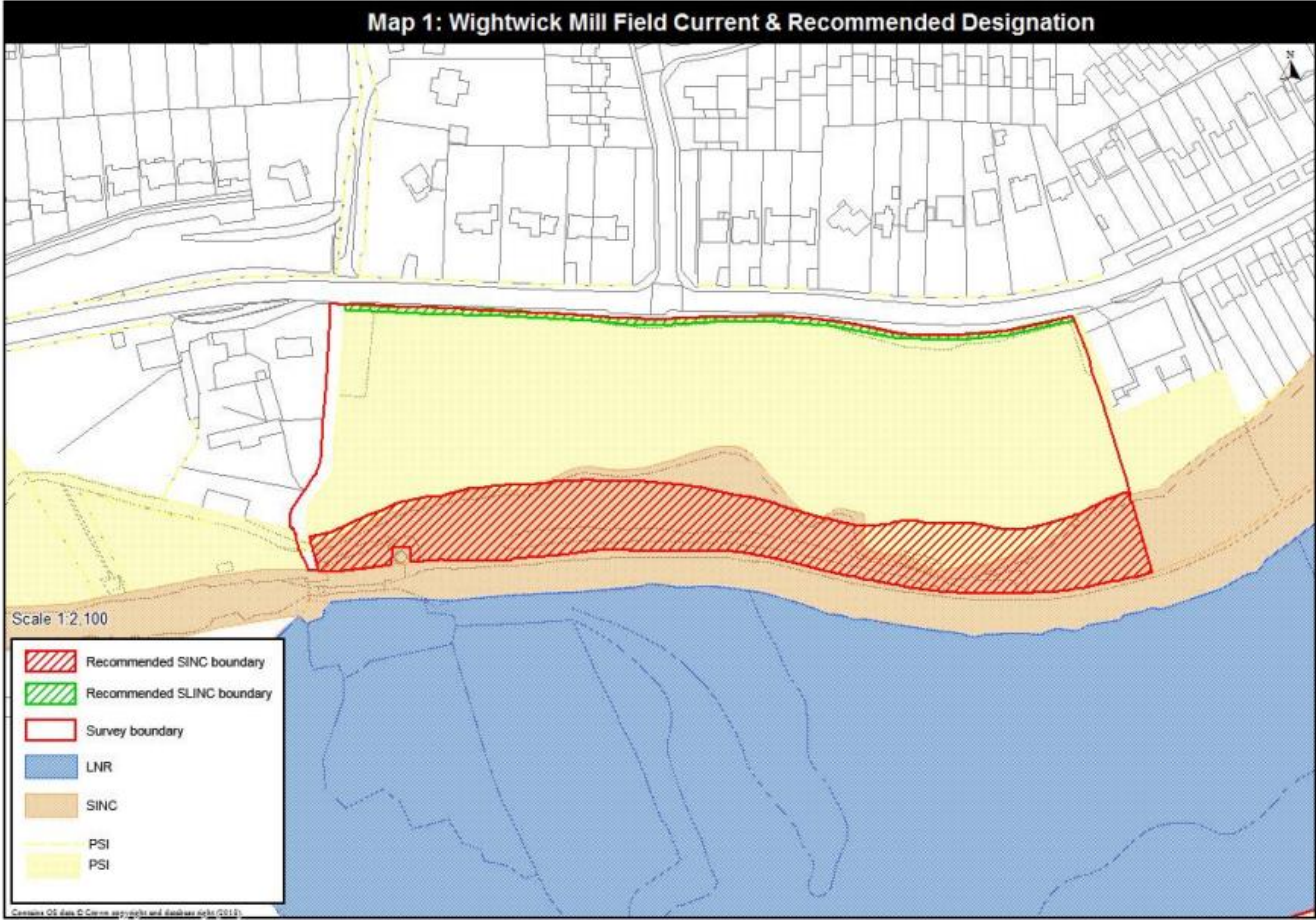
Plan 22 Rocket Pool SLINC (red line boundary)



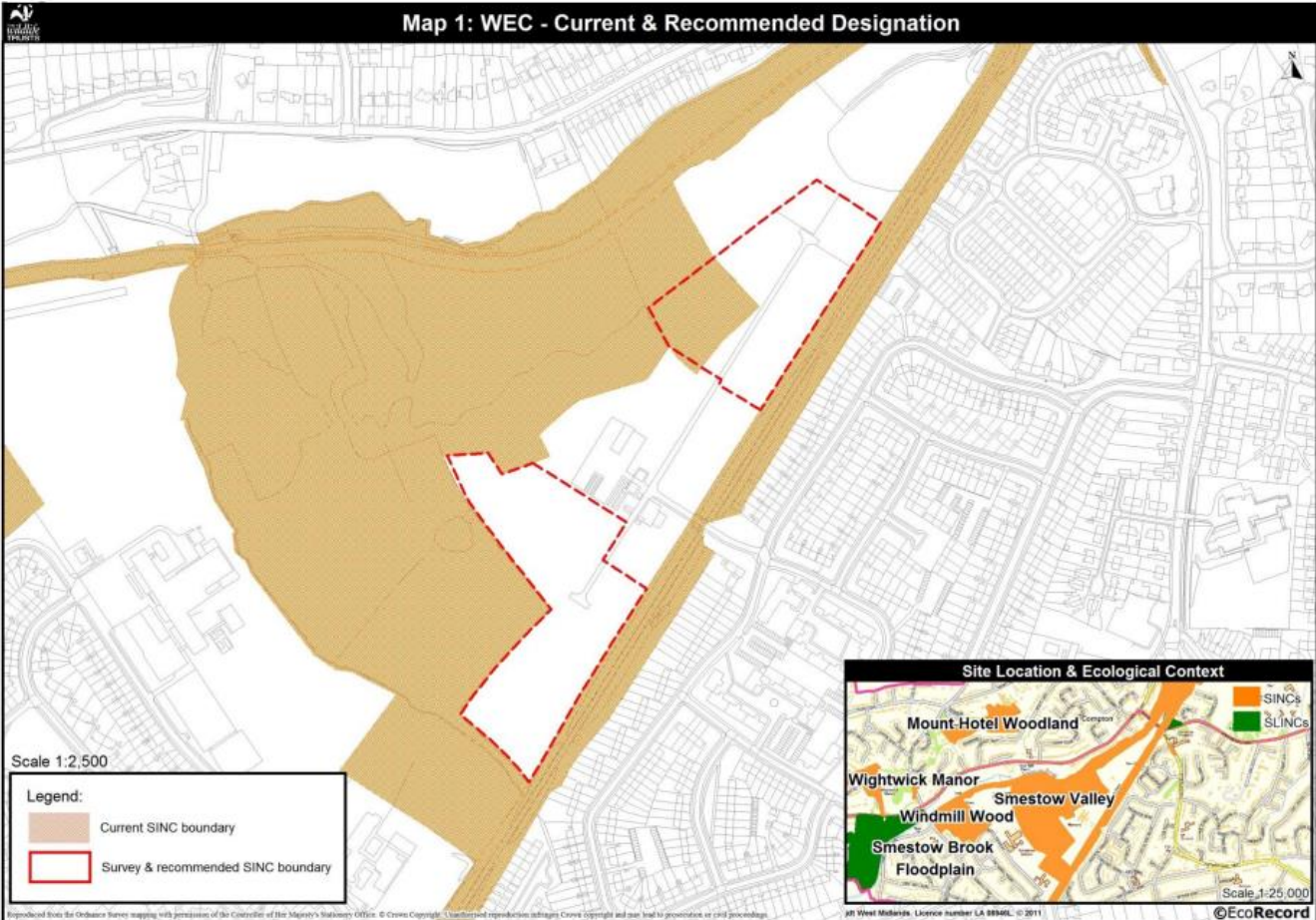
Plan 23 Sedgley Park SINC / SLINC (red line boundary / green line boundary & zigzag)



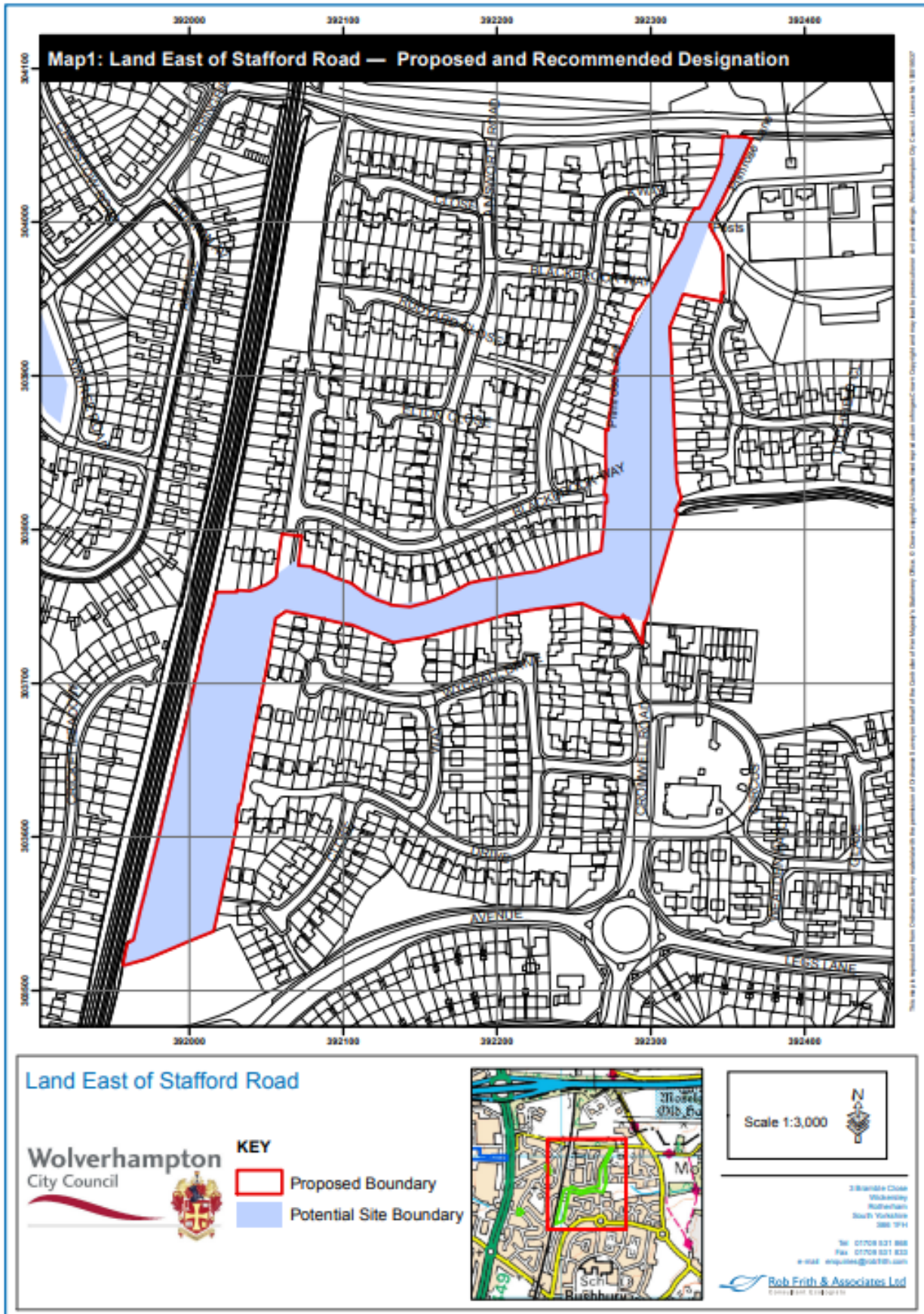
Plan 24 Smestow Valley SINC – Wightwick Mill Field (red hashed area)



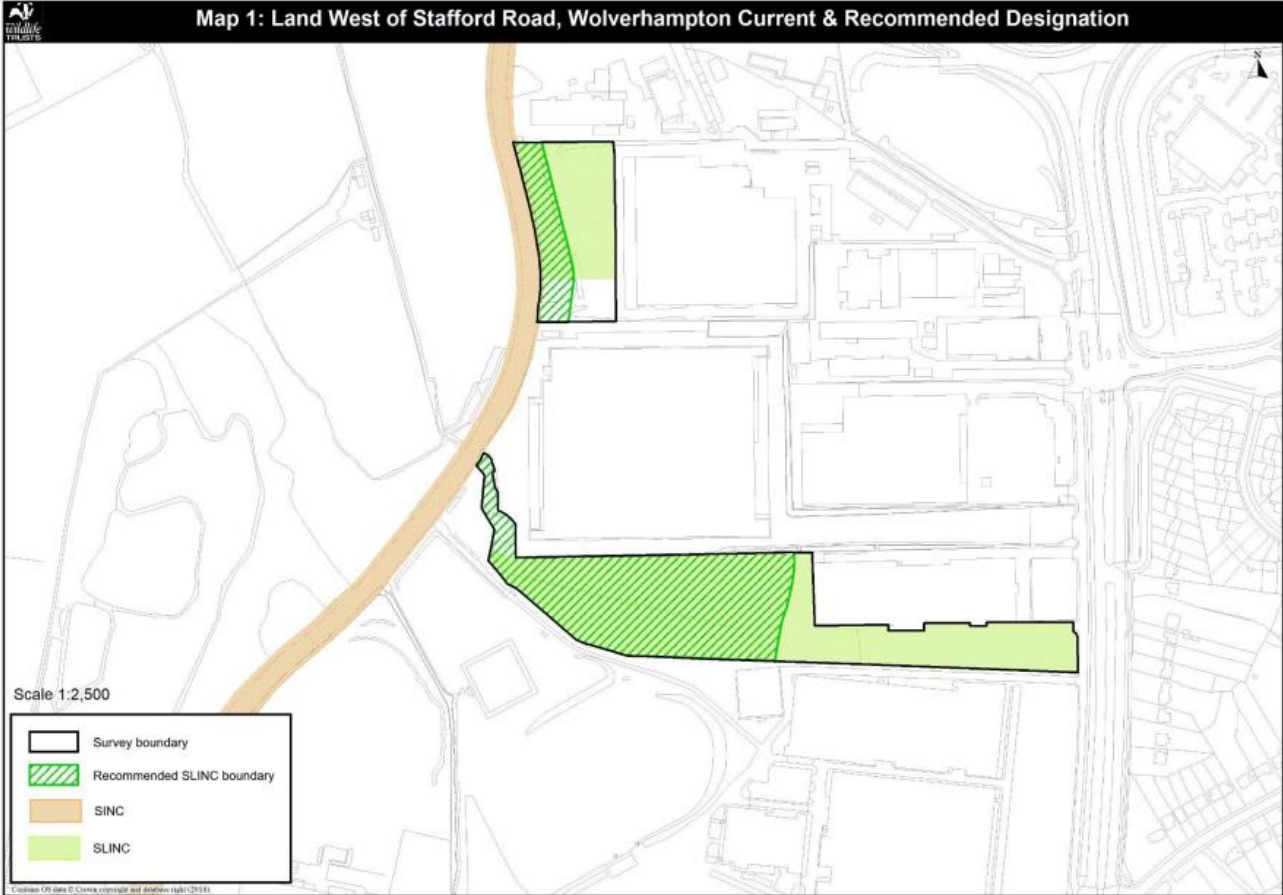
Plan 25 Smestow Valley SINC – Wolverhampton Environment Centre (red line boundary)



Plan 26 Land East of Stafford Road SLINC (red line boundary)



Plan 27 Land West of Stafford Road SLINC (green line boundary)



Plan 28 Woodlands Walk SLINC (red line boundary)

